

bddi Al Kaif
DAKHIN BARI



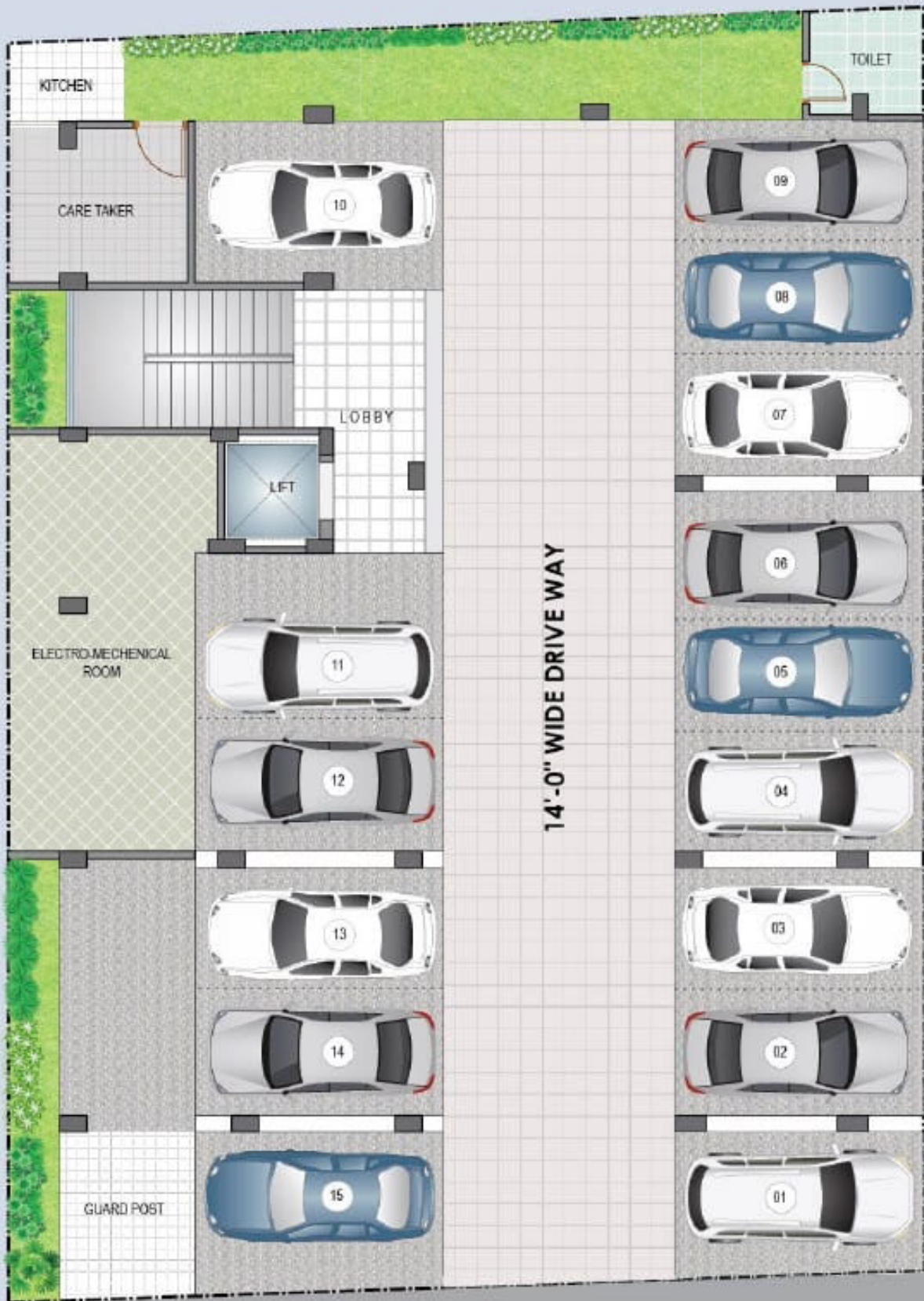
PROJECT INFO

Project Name	: 
Address	: House-1031/1, Road-17/B, Baitul Aman Housing Society Adabor, Mohammadpur, Dhaka.
Land Area	: 6.54 Katha
Facing	: South
Number of Storied	: G+9
Size of Apartment	: Type A - 1280 sft, Type B - 1170 sft, Type C - 1100 sft
Number of Parking	: 15
Number of Lift	: 01

LOCATION MAP



GROUND FLOOR

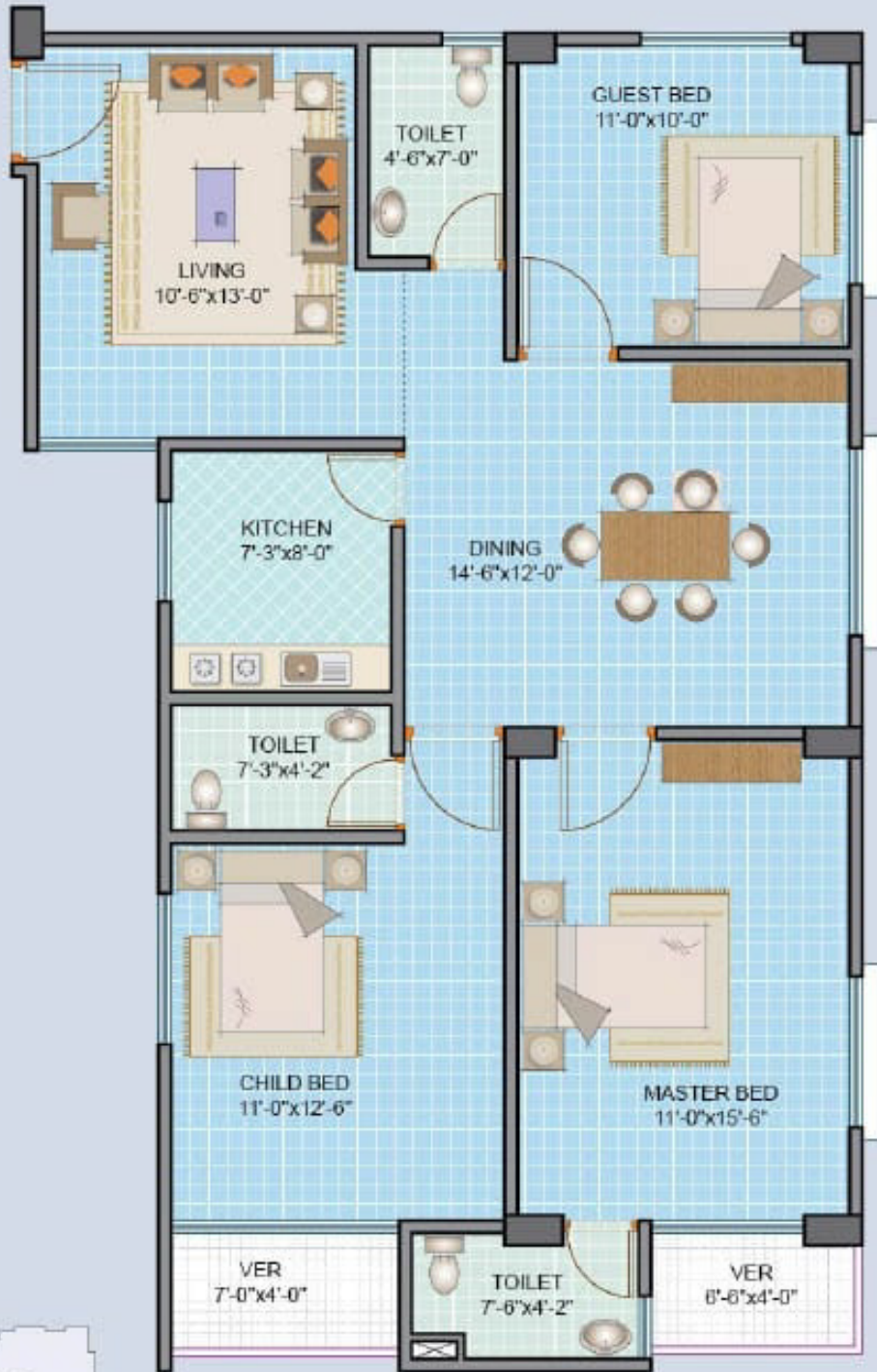


MAIN ROAD



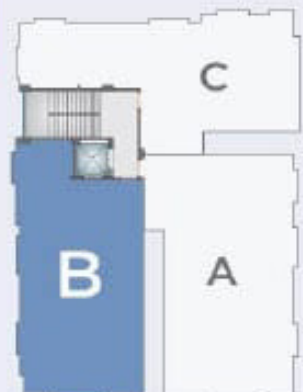
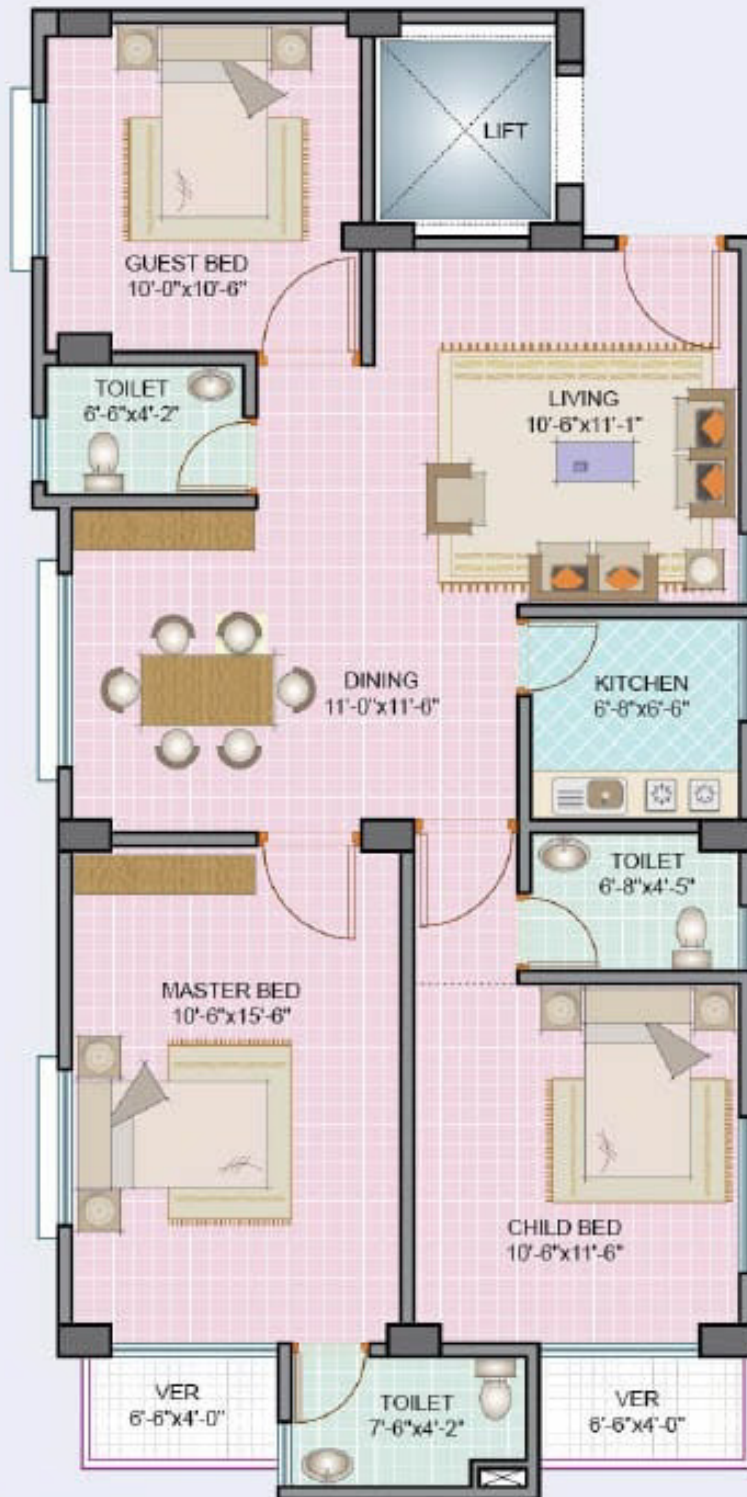
TYPE - A

1280 SFT



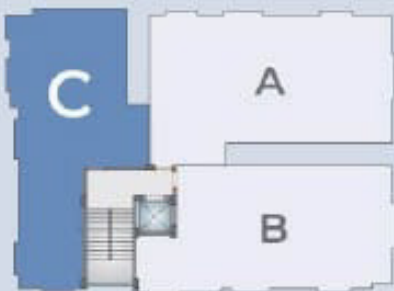
TYPE - B

1170 SFT



TYPE - C

1100 SFT



FEATURES & AMENITIES

ELECTRICAL FEATURES

- Best quality wires (Eastern, BRB, BBS or equivalent).
- Imported MK switches and sockets.
- Separate electric distribution box for each apartment.
- All 3 pin power outlets with earth connection.
- Telephone sockets in master bed and living room.
- Good quality and standard concealed intercom system.
- Concealed satellite TV cable in the living and master bed room.
- Provision for air-conditioner in two points for each apartment (Master Bed & Child Bed).
- Electric point provision for washing machine in each apartment (Utility Space).
- One internet point in any suitable location.

KITCHEN FEATURES

- Double burner gas point with tiles topped platforms.
- One high polish stainless steel sink with mixture.
- Exhaust fan at kitchen in each apartment.

BATHROOM FEATURES

- RAK or equivalent sanitary fixtures in all bathrooms.
- RAK/ Fu-Wang/ Matching glazed tiles in floor and wall for master and other baths except servant's toilet (ordinary tiles).
- Best quality chrome plated fittings with manufacturer's warranty.
- Hot water provision in master bath & child bath.
- Mirror in bathrooms with overhead lamps.
- Showerheads, towel rail, soap and tissue paper holder.
- Provision of one basin point at dining space.

ENGINEERING FEATURES

- Total Foundation and superstructure design and supervision by a team of reputed and professional Structural Engineers.
- Structural design parameters based on American Concrete Institute (ACI) and American Standards for Testing Materials (ASTM) codes and Bangladesh National Building Codes (BNBC).
- Structural analysis for design carried out by EXACT method that utilizes the latest computer software.
- Heavy reinforced cement concrete foundation.
- Systematic structural combination of steel reinforced frame and shear wall core.
- All structural materials including steel, cement, bricks, Sylhet sand and others aggregates of highest standard screened for quality including laboratory testing.
- Floor slabs all reinforced cement concrete.
- Sub-soil investigation and soil composition comprehensively analyzed by the latest testing equipment and laboratory techniques.
- Comprehensive section by section checking and testing of all steel reinforcement by professional design and supervising Engineers.
- Structure Designed to withstand Earthquakes of prevalent intensity.
- Systematic testing of concrete and steel reinforcement at every stage from quality control Laboratories(BUET).
- Direct supervision at every stage of construction by a team of experienced and qualified Civil Engineers to ensure highest quality of workmanship.



FEATURES & AMENITIES

BUILDING ENTRANCE

- Secured decorative MS gate with lamp as per elevation & perspective of the building.
- Attractive apartment logos.
- Comfortable internal driveway.
- Guard post.

RECEPTION LOBBY

- Reception desk with Intercom set.
- Tiled floor in reception area.
- Intercom connection from every apartment to reception.
- Security guard room and driver's waiting room with toilet.

DOORS

- Imported/Shegun wooden solid decorative main entrance door with brass plated apartment number, chain, check viewer and safety lock.
- Bathroom doors of durable PVC with matching color.
- Veneer partex door including mortise lock with French polish for internal door & kitchen.
- Shegun wooden door frame for main door and Mehegoni wooden door frame for internal door.

WINDOW/GRILL

- Rain water barrier in 4" aluminium section.
- Aluminum sliding with 5mm thickness tinted/ clear glass.
- Standard ½x½ Solid bar safety grills in all windows with matching enamel paint.
- Provision of Mosquito net shutter in all external windows and external sliding doors.

VERANDAH

- Comfortable sufficient size verandahs are strategically located to enjoy outside view of the surroundings.

FLOOR

- Good quality RAK / DBL/Greatwall (24"X 24") or equivalent mirror polished tiles in all rooms, verandahs except toilet & kitchen.

WALLS AND PARTITIONS

- Internal and external wall of 5" thick machine made/ first class bricks.
- Wall surfaces of smooth finished plaster.
- Plastic paint in all internal walls and ceiling of soft colors.

LIFT

- One Superior quality lifts each building from reputed manufacturers of Korea, Thailand, China or any country to serve every floor.
- Lifts will have adequate lighting, well finished doors and cabin, emergency alarm and Intercom.

GENERATOR

- Manufacturer of European countries, Korea, Thailand, China or equivalent generator of required capacity for operating the lifts, water pumps, lighting in common areas, stairs and two light points & two fan points in each apartment in case of power failure.

